






64 Wallace Road Cranbourne VIC

3  2  4 

Set on a generous 651sqm (approx.) corner block, this beautifully maintained residence combines comfort, functionality, and location in one exceptional package. Nestled in a quiet, family-friendly pocket of Cranbourne, this home is perfectly suited for families, first-home buyers, or savvy investors seeking quality and convenience.

Featuring three well-sized bedrooms, two modern bathrooms, and a double garage, the home offers a flexible layout with light-filled living spaces and a well-appointed kitchen that connects effortlessly to the dining area. With ample storage throughout and a spacious yard, it's designed to deliver both comfort and practicality for everyday living.

Type : House
Price : \$ 690,888
Land Size : 651 sqm
View : <https://www.frederickproperty.com.au/sale/vic/south-east/cranbourne/residential/house/8534297>

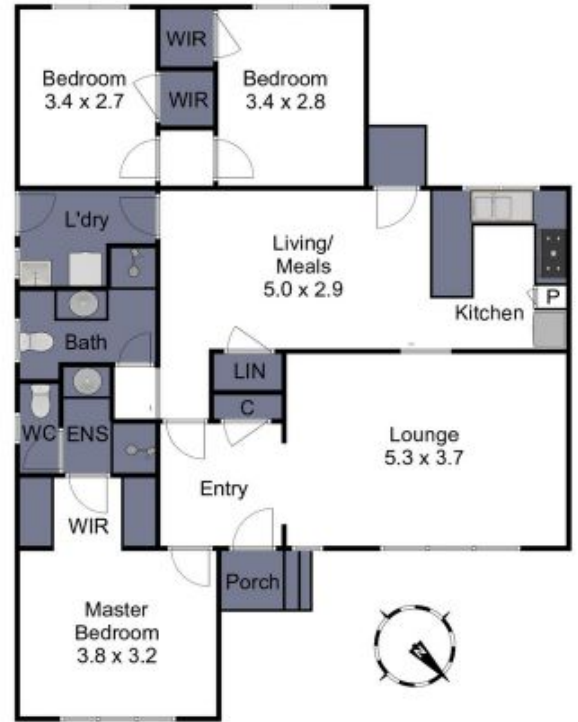
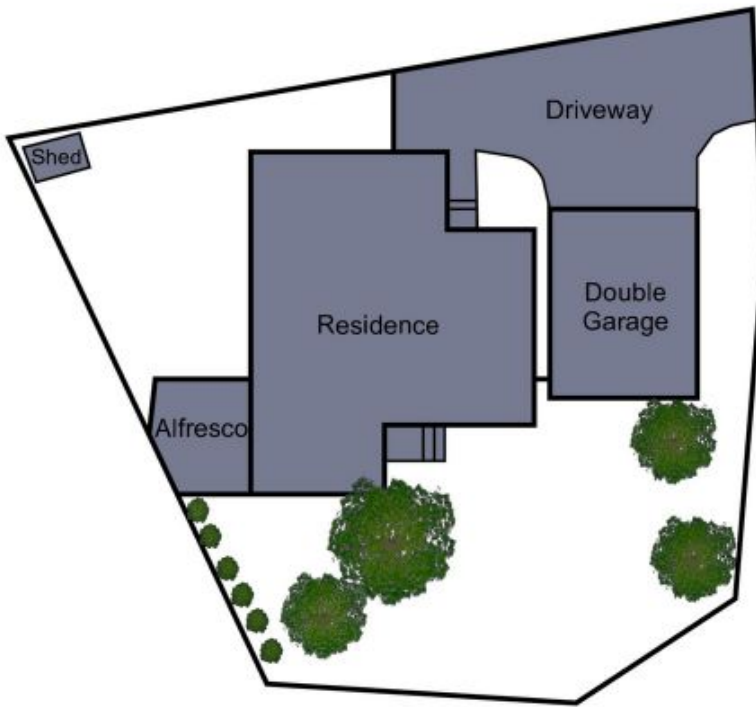


Fred Liu
03 9889 1118



Daniel Chew
03 9889 1118

[For full version visit the website](https://www.frederickproperty.com.au)



64 Wallace Rd, Cranbourne

THIS FLOOR PLAN IS A SKETCH ALL DATA SHOWN IS GENERAL ONLY.
 NB: ALL DIMENSIONS STATED ARE APPROXIMATE ONLY
 AND SHOULD NOT BE TAKEN AS DEFINITE.