



814/157 A'beckett Street Melbourne VIC

1  1 

Queens Place presents an exceptional opportunity to experience the very best of Melbourne living. Boasting breathtaking city views and a lifestyle like no other, this newly completed development offers the ultimate in residential amenities. Situated in a prime CBD location, it places you at the centre of Melbourne's most iconic attractions, including Flagstaff Gardens, universities, renowned dining spots, Chinatown, and convenient public transport options.

This one-bedroom apartment has been thoughtfully designed with modern finishes and a focus on comfort. Featuring timber floorboards and floor-to-ceiling windows, it offers expansive, unobstructed views over the Melbourne skyline. The open-plan living and dining area is generously

Type : Apartment
Land Size : 50 sqm
View : <https://www.frederickproperty.com.au/sale/vic/inner-city/melbourne/residential/apartment/8307761>

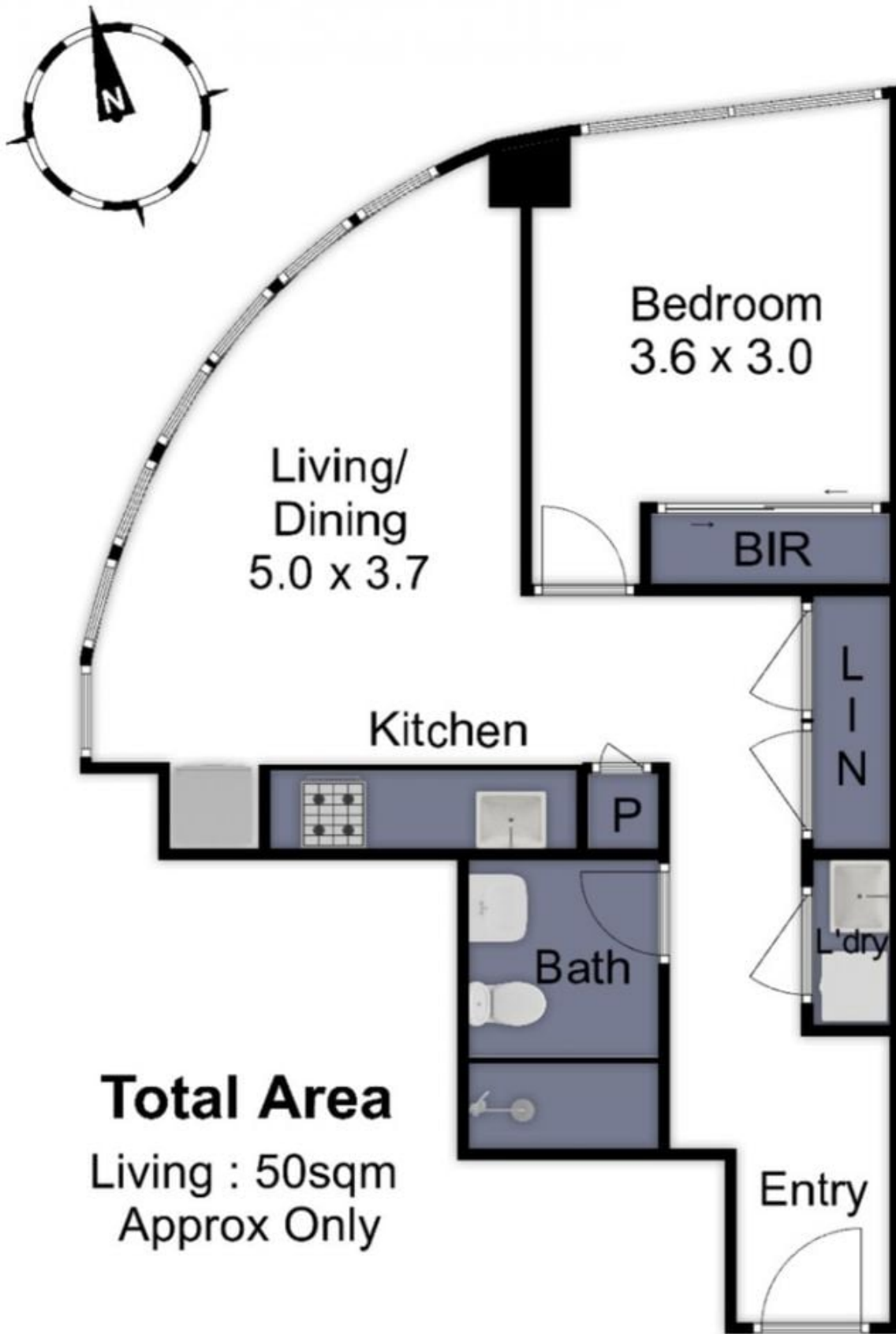


Renee Tian
03 9889 1118



Fred Liu
03 9889 1118

[For full version visit the website](https://www.frederickproperty.com.au)



Total Area
Living : 50sqm
Approx Only

814/157 A'Beckett, Street Melbourne

THIS FLOOR PLAN IS A SKETCH ALL DATA SHOWN IS GENERAL ONLY.
NB: ALL DIMENSIONS STATED ARE APPROXIMATE ONLY
AND SHOULD NOT BE TAKEN AS DEFINITE.