



1/14 Darbyshire Road Mount Waverley VIC

4  2  2 

Blessed with a brilliant frontage onto a leafy street, this beautifully presented, split level home offers a charming environment for family life with its stylish dimensions filled with natural light and offering an abundance of accommodation for the growing family.

Glistening polished floorboards greet you upon entry and run fluidly through to the stunning, open plan lounge and dining room where large windows create a light-filled and welcoming haven.

Stepping down into the kitchen, you'll be pleased to find stainless steel appliances (gas cooktop and oven) and a brilliant island breakfast bench, while outside a compact yard provides low-maintenance enjoyment.

Four well-sized bedrooms are spread throughout the home

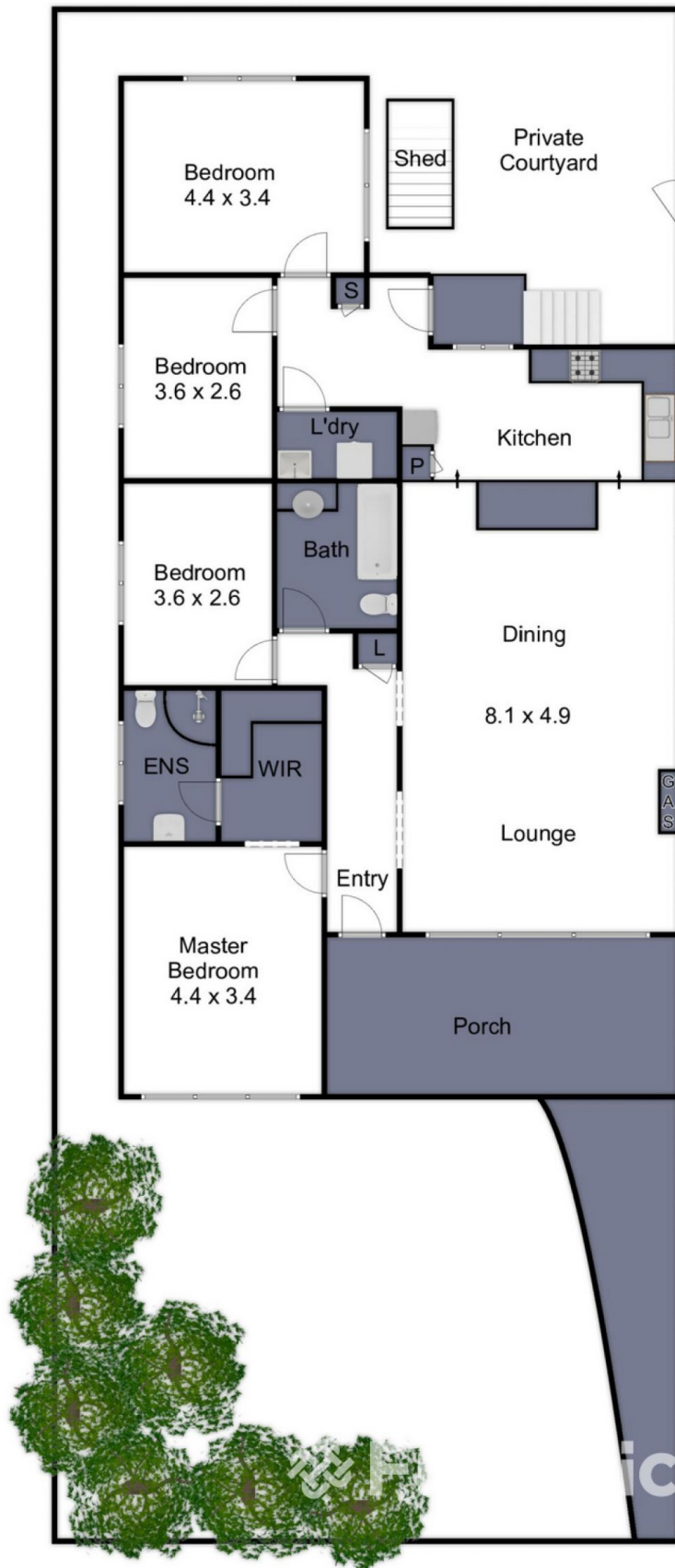
Price : \$ 850,000
Land Size : 329 sqm
View : <https://www.frederickproperty.com.au/sale/vic/east/mount-waverley/residential/unit/7929100>



Fred Liu
03 9889 1118



Cassie Gu
03 9889 1118



14 Darbyshire Road, Mount Waverley

THIS FLOOR PLAN IS A SKETCH ALL DATA SHOWN IS GENERAL ONLY.
NB: ALL DIMENSIONS STATED ARE APPROXIMATE ONLY
AND SHOULD NOT BE TAKEN AS DEFINITE.