

## 1/1 Leigh Street Bentleigh East VIC

4  2  2 

Appreciating stylish appointments and a sophisticated design, this corner residence presents an impressive lifestyle for executives, families and investors with superb street frontage and a low-maintenance design.

Fashionable and functional with streamlined spaces flowing from inside to out, the layout entices you in with sleek floorboards leading through to the living and dining zone that's overlooked by a modern kitchen boasting stone benches and Fisher & Paykel appliances.

For quick meals on the run, you'll appreciate the inclusion of a breakfast bench, while sliding doors serve to connect indoor enjoyment with outdoor entertaining, stepping onto a paved area and delightful courtyard.

Desirably placed on the ground floor, the master bedroom

**Price** : \$ 1,100,000  
**Land Size** : 327 sqm  
**View** : <https://www.frederickproperty.com.au/sale/vic/bayside/bentleigh-east/residential/townhouse/7727387>

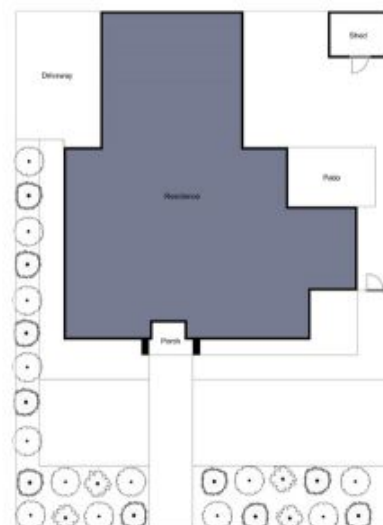


**Fred Liu**  
03 9889 1118



**Jackson Yang**  
03 9889 1118

# 1/1 Leigh Street BENTLEIGH EAST



Indicative only. Dimensions are approximate. All information contained herein is gathered from sources we believe to be reliable. However, we cannot guarantee its accuracy and interested persons should rely on their own enquiries.