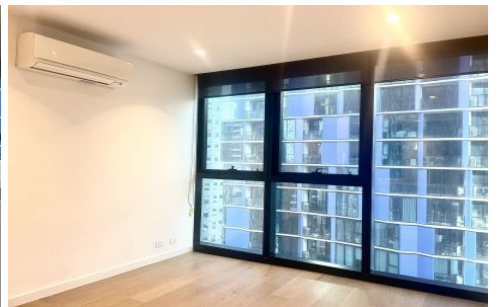




Frederick



2706/462 Elizabeth Street Melbourne VIC

2 🛏 2 🚿

Designed by Elenberg Fraser for the prestigious Victoria One Complex, this 27th floor apartment boasts floor-to-ceiling windows enrapture each room, flooding the apartment in natural light with an unbeatable guarantee to privacy. Two bedrooms with BIR share in premium north-facing views; a private ensuite joined by a main bathroom with guest access.

View : <https://www.frederickproperty.com.au/lease/vic/inner-city/melbourne/residential/apartment/7631110>

Smartly dressed in white stone with integrated appliances, glass splash back, and waterfall island, the kitchen also includes an adjacent European laundry. Further value is provided with lounge room split-system A/C, and bathrooms adorned with rainfall shower heads, concealed cisterns and extensive mirrored cabinetry.



Fred Liu
03 9889 1118



Jackson Yang
03 9889 1118

World-class resort-style facilities are staged over three levels featuring a fully equipped gym, swimming pool/spa, a

<https://www.frederickproperty.com.au>