

3505/350 William Street Melbourne VIC

2 🏠 2 🚗

Situated on one of the highest points in Melbourne, overlooking the historic Flagstaff Gardens, the 350 William Street Tower is a landmark residential development, designed by renowned architects Fender Katsalidis.

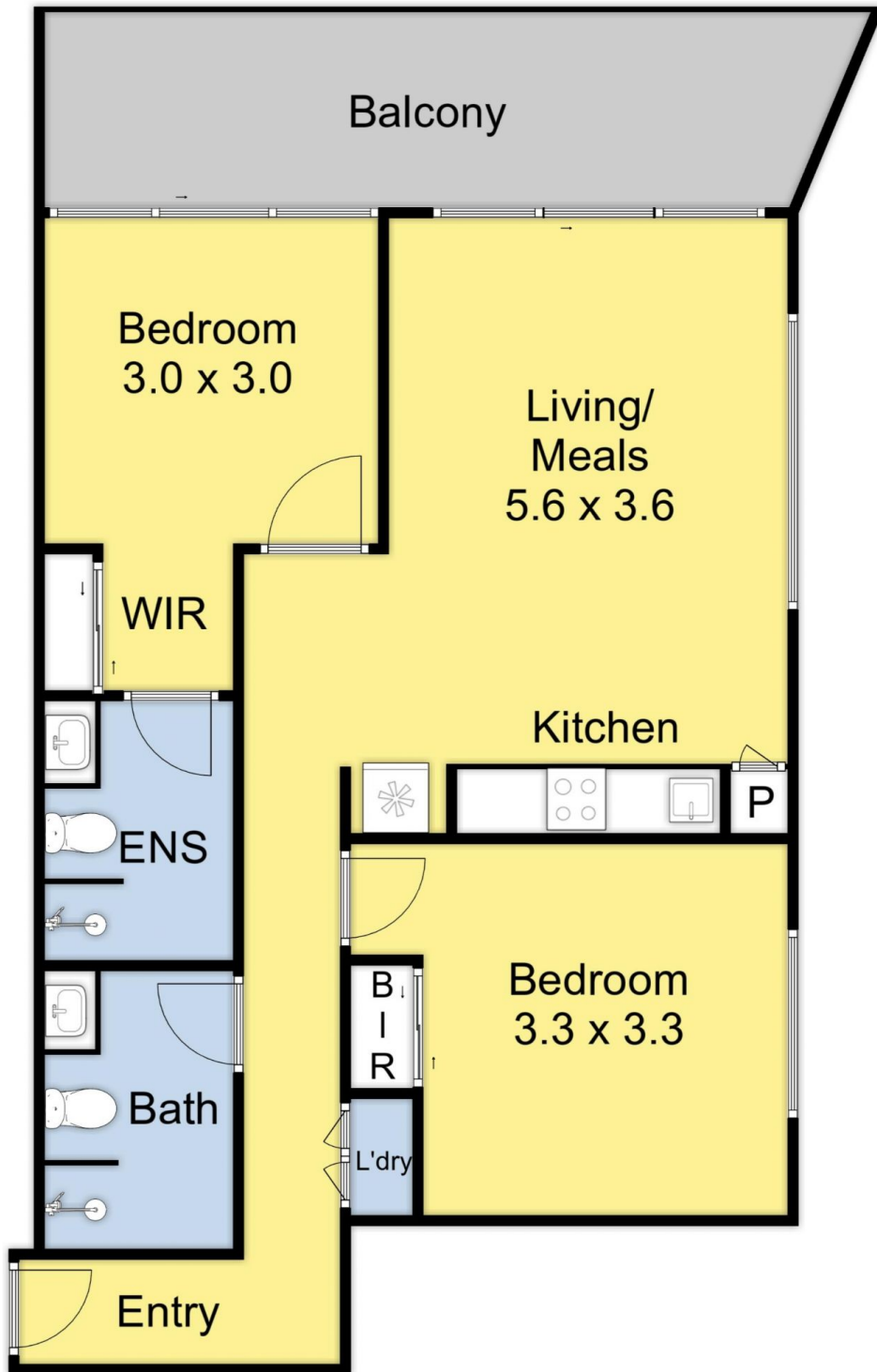
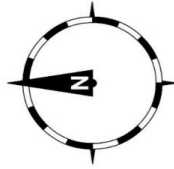
Building Size : 80 sqm
Land Size : 80 sqm
View : <https://www.frederickproperty.com.au/lease/vic/inner-city/melbourne/residential/apartment/7308442>

Conveniently located within walking distance of Flagstaff Station, Victoria Market, the State Library, two universities and a host of cafes and restaurants, the Art on the Park tower is a unique creation. A monolithic yet elegant sculpture, it rises in undulations with a rippling effect afforded by an undulating screening system, providing shade from the western sun while making a striking design statement.

A basement jazz club is envisaged, with ground floor cafe and lobbies. Levels 1-3 are given over to a gymnasium, offices for the serviced hotel operator, laundry and car parking, while the top floors, Levels 20-35, will house the



Fred Liu
03 9889 1118



3505/350 Williams St Melbourne



THIS FLOOR PLAN IS A SKETCH ALL DATA SHOWN IS GENERAL ONLY.
NB: ALL DIMENSIONS STATED ARE APPROXIMATE ONLY
AND SHOULD NOT BE TAKEN AS DEFINITE