



20 Sunderland Avenue Ashburton VIC

3  2  2 

Fusing character and charm with contemporary modern style, this renovated home is bathed in northerly sunshine and presents the family with a brilliant lifestyle only footsteps from Holmesglen Institute and trains.

Oriented to capture the sunlight, the streamlined lounge, dining and kitchen provides a relaxed free-flowing layout that's enriched stainless steel appliances including a dishwasher, Stainless steel double sink, glass splashbacks plus a waterfall stone breakfast bench.

Catering for the larger family or those keen to invest, the three robed bedrooms accompanied by two stylish bathrooms. A reflection of the home's quality, you'll find a beautiful covered decking and pergola, overlooking to the backyard provides a peaceful and private space for outdoor fun with family and friends.

Price : \$ 1,450,000

Land Size : 694 sqm

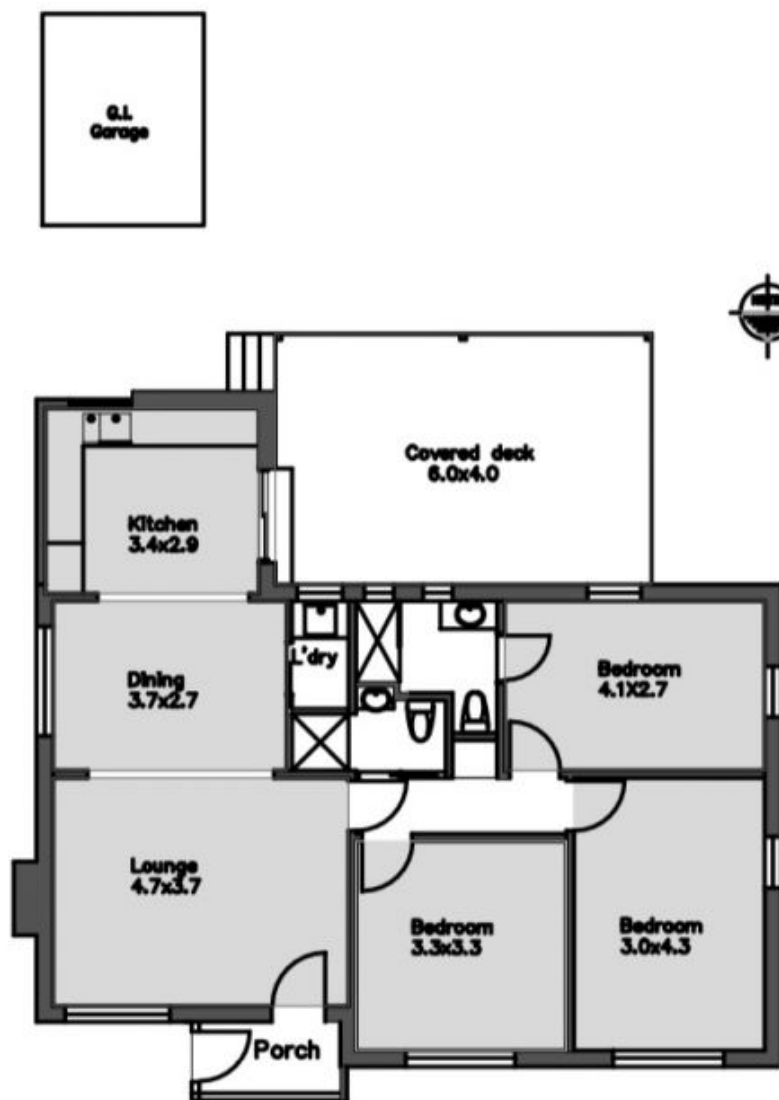
View : <https://www.frederickproperty.com.au/sale/vic/east/ashburton/residential/house/7209214>



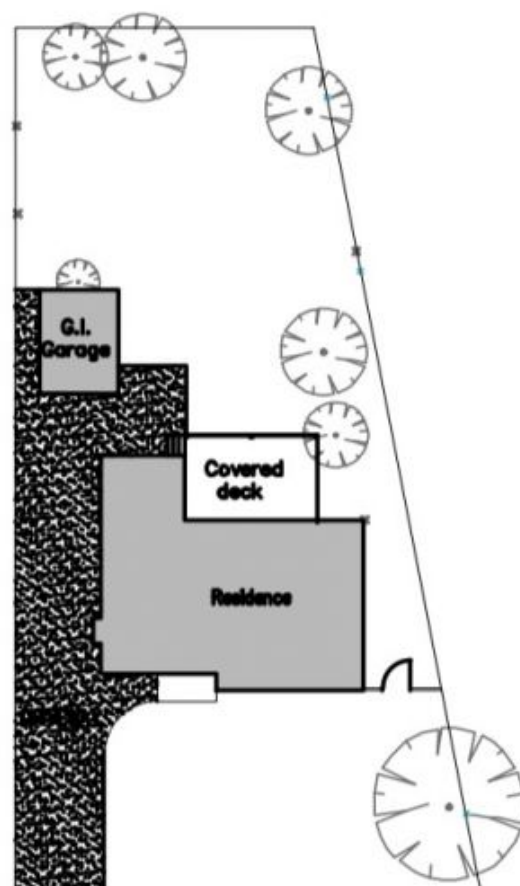
Fred Liu
03 9889 1118



Jackson Yang
03 9889 1118



Lower Ground Floor



Site Plan

20 Sunderland Avenue Ashburdon

THIS FLOOR PLAN IS A SKETCH ALL DATA SHOWN IS GENERAL ONLY.
NB: ALL DIMENSIONS STATED ARE APPROXIMATE ONLY
AND SHOULD NOT BE TAKEN AS DEFINITE