



3505/350 William Street Melbourne VIC

2 🛏 2 🚿

Situated on one of the highest points in Melbourne, overlooking the historic Flagstaff Gardens, the 350 William Street Tower is a landmark residential development, designed by renowned architects Fender Katsalidis.

Conveniently located within walking distance of Flagstaff Station, Victoria Market, the State Library, two universities and a host of cafes and restaurants, the Art on the Park tower is a unique creation. A monolithic yet elegant sculpture, it rises in undulations with a rippling effect afforded by an undulating screening system, providing shade from the western sun while making a striking design statement.

A basement jazz club is envisaged, with ground floor cafe and lobbies. Levels 1-3 are given over to a gymnasium,

Type : Apartment
Price : Please contact Agent
Building Size : 80 sqm
Land Size : 80 sqm
View : <https://www.frederickproperty.com.au/sale/vic/inner-city/melbourne/residential/apartment/6557615>

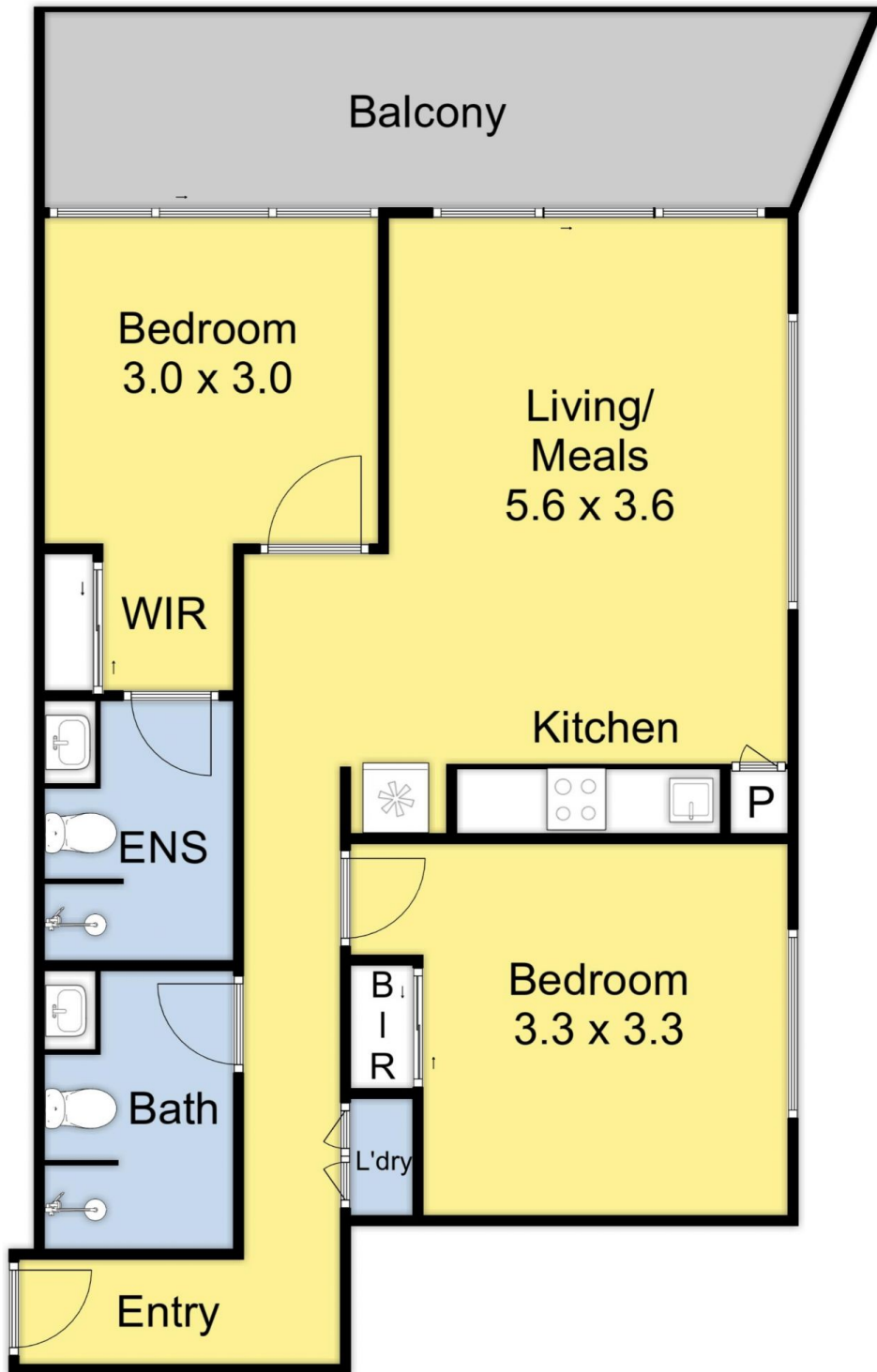
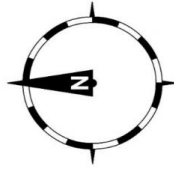
[For full version visit the website](#)



Fred Liu
03 9889 1118



Cassie Gu
03 9889 1118



3505/350 Williams St Melbourne



THIS FLOOR PLAN IS A SKETCH ALL DATA SHOWN IS GENERAL ONLY.
NB: ALL DIMENSIONS STATED ARE APPROXIMATE ONLY
AND SHOULD NOT BE TAKEN AS DEFINITE