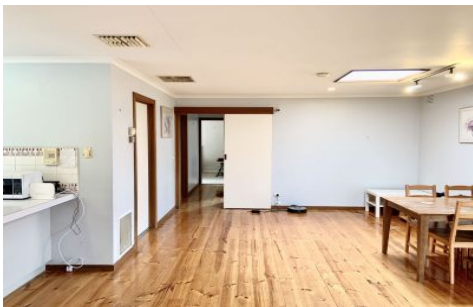




Frederick



2/6 Kintore Crescent Box Hill VIC

4 2 2

This spacious back unit of two comprises four bedrooms, two bathrooms with four separate toilets, double entrances and a good size backyard.

View : <https://www.frederickproperty.com.au/lease/vic/east/box-hill/residential/block-of-units/5891808>

It is semi-furnished with essential appliances and furnitures. Central ducted Heating and evaporate cooling ensure all year comforts. Double parking via the back entrance onsite with lots of street parkings available.



Fred Liu
03 9889 1118

Within walking distance to all desired amenities including Box Hill Central, trains, buses, shops, restaurants, Box Hill Aqualink, Box Hill Public Hospital, Epworth Private Hospital and Box Hill TAFE.

It is a wonderful home ideally for who desire lots of home spaces and care to acquire this rare location so close to Box Hill Central.

<https://www.frederickproperty.com.au>