



51 Guinevere Parade Glen Waverley VIC

4  2  4 

Advantaged by its exceptional corner position on 644.9 sqm approx., this comfortable, clinker brick, family home presents an enticing opportunity to renovate, rebuild with your dream home or redevelop with two luxurious street-front townhouses (STCA).

Superbly configured for family enjoyment, the homes current day spaces include four generously sized bedrooms; three with built-in-robbers plus the master with walk-in-robe and ensuite, further served by a family bathroom and separate toilet.

Flooded with natural light, the L-shaped lounge and dining room glides over polished floorboards and boasts the appeal of a gas log fire, while the kitchen and meals/family room embrace a breakfast bench, gas stove, Neff oven plus a Dishlex dishwasher.

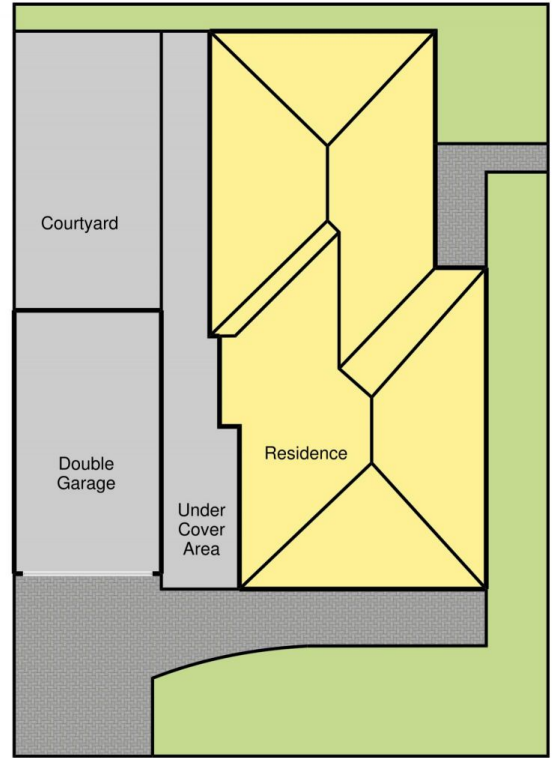
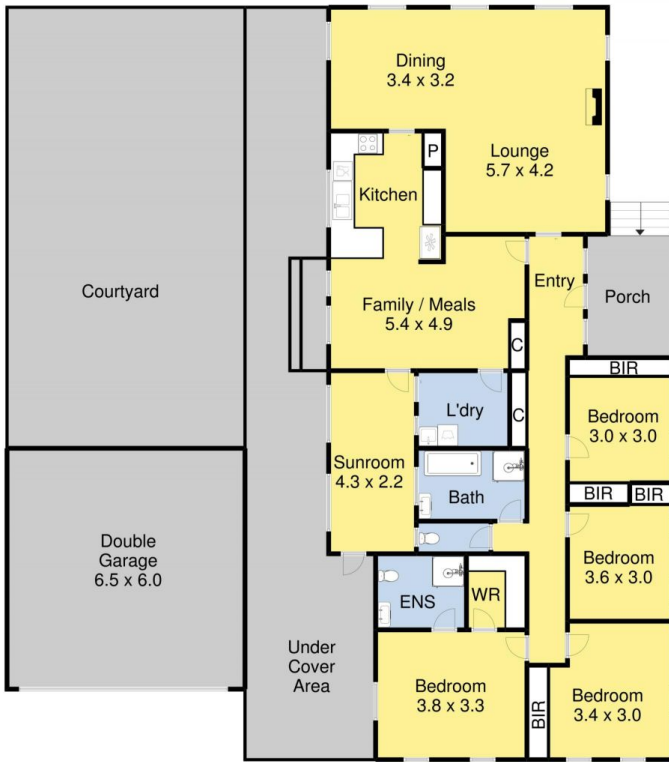
Land Size : 644.9 sqm
View : <https://www.frederickproperty.com.au/sale/vic/east/glen-waverley/residential/house/5875115>



Fred Liu
03 9889 1118



Steven Yao
0431 997 818



51 GUINEVERE PARADE, GLEN WAVERLEY

Disclaimer: Floor Plan measurements are approximate and are for illustrative purposes only. While we do not doubt the floor plans accuracy, we make no guarantee, warranty or representation as to the accuracy and completeness of the floor plan.