



# Frederick



### 3 Walter Street MITCHAM VIC

4 2 2

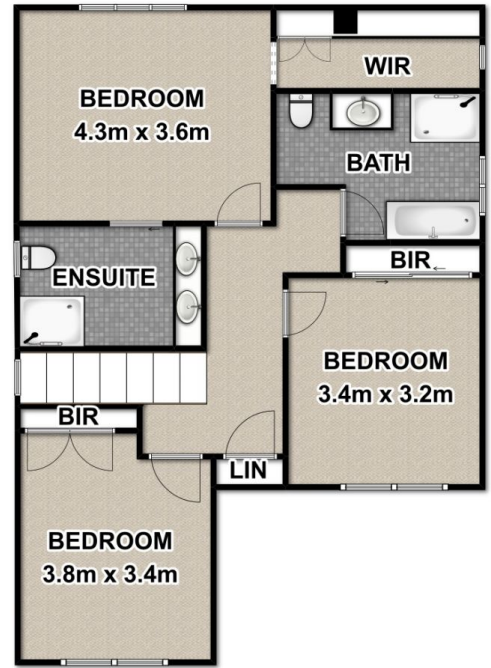
Quietly hidden behind Whitehorse Rd, this high quality house has one of the most fabulous locations in eastern Melbourne, being next door to local child care and Antonial Park primary school, Heatherdale Station and East Link Ringwood entrance are only stones away, Mitcham local shops and Eastland Shopping Center are both within walking distance.

It offers you the most meticulous package: four huge bedrooms with BIRs (master with ensuite & WIR) and a family bathroom upstairs, open living and entertainment area downstairs featured with Spotted Gum Hard Timber floor and a stunning ceaserstone and two-packed kitchen, which comes with Lofra 900mm freestand cooktop and oven and Miele dish washer and E-spring water unit. All cabinet doors and drawers are soft close, double garage with remote control.

**Building Size** : 27 sqm  
**Land Size** : 308 sqm  
**View** : <https://www.frederickproperty.com.au/sale/vic/east/mitcham/residential/house/5875084>



**Fred Liu**  
03 9889 1118



**FIRST FLOOR**

**3 WALTER ST  
MITCHAM**

