



Frederick



5 Paranda Court VERMONT VIC

4 2 2

A winning family combination, this unbeatable home embraces multiple living zones, a sparkling in-ground pool, enviable Dandenong Ranges views and a dream position in the prized Vermont Secondary Zone.

Resting on the high side of the road, the homes spacious layout commences with a welcoming entry foyer that flows through to a glorious L-shaped lounge and dining room thats highlighted by views out to the Dandenong Ranges.

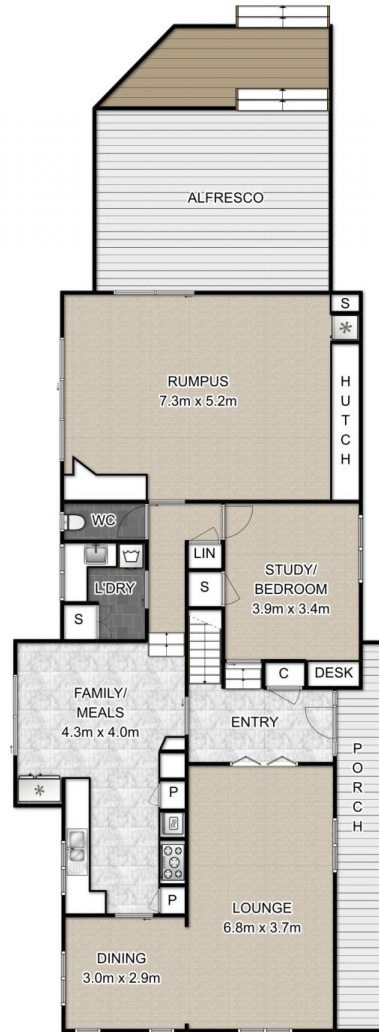
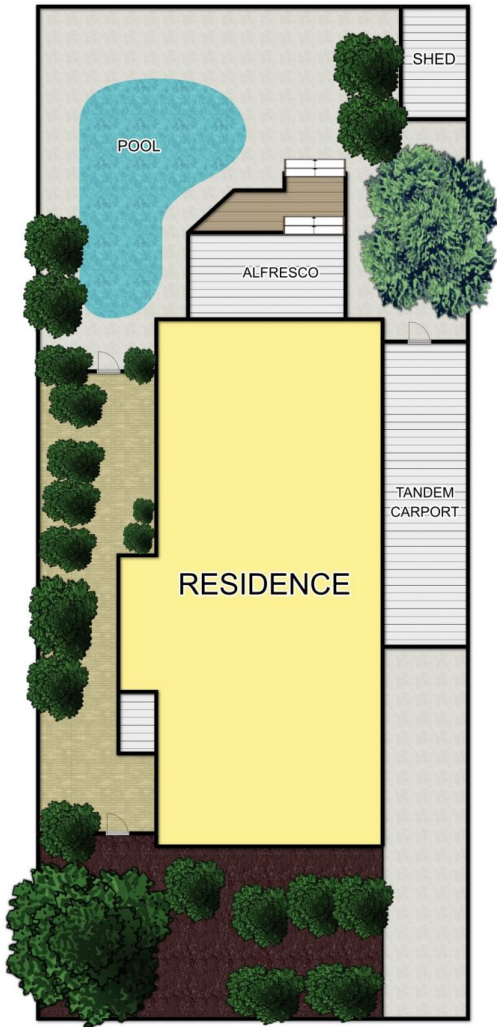
The kitchen and meals zone showcase the appeal of glass splashbacks, Westinghouse appliances, Fisher & Paykel dish drawer dishwasher plus an appliance cupboard, while sliding doors offer a link out to a splendid paved area that runs along the side of the home.

Tempting year round entertaining, a huge rumpus room

Land Size : 654 sqm
View : <https://www.frederickproperty.com.au/sale/vic/east/vermont/residential/house/5875079>



Fred Liu
03 9889 1118



FIRST FLOOR

5 PARANDA CRT VERMONT

THIS FLOOR PLAN IS A SKETCH ALL DATA SHOWN IS GENERAL ONLY.
NB: ALL DIMENSIONS STATED ARE APPROXIMATE ONLY
AND SHOULD NOT BE TAKEN AS DEFINITE.